

New seating 2023

# Products



Rim



# 4-61 Products

## **4 Office Chairs**

- 4 Space
- 6 Muuna
- 8 Zero G
- 10 Victory
- 12 FLEXi
- 14 FLEXi Tech
- 15 Easy Pro
- 16 Tea
- 18 Focus
- 18 Futura 150
- 19 Anatom
- 19 Bello

## **20 Conference Chairs**

- 20 Kvadrato
- 20 Net
- 20 Rondo
- 21 Rewind
- 22 Redonda
- 24 Web
- 26 Sitty

## **28 Soft Seating**

- 30 Winx
- 32 Winx Lounge
- 34 Edge
- 36 Ca-Va
- 38 Tania
- 39 Anet
- 40 Agility
- 42 Organix
- 44 Organix Privacy
- 46 Organix Privacy Box
- 47 Organix Corner System
- 48 Cubix
- 50 Modular
- 51 Aleta
- 52 Stones
- 53 Move

## **54 Tables**

- 54 Witty
- 56 Coffee Tables
- 58 Connect
- 60 Multi
- 60 Clap
- 61 Tables
- 61 Tip-Up

# 62-70 Fabrics

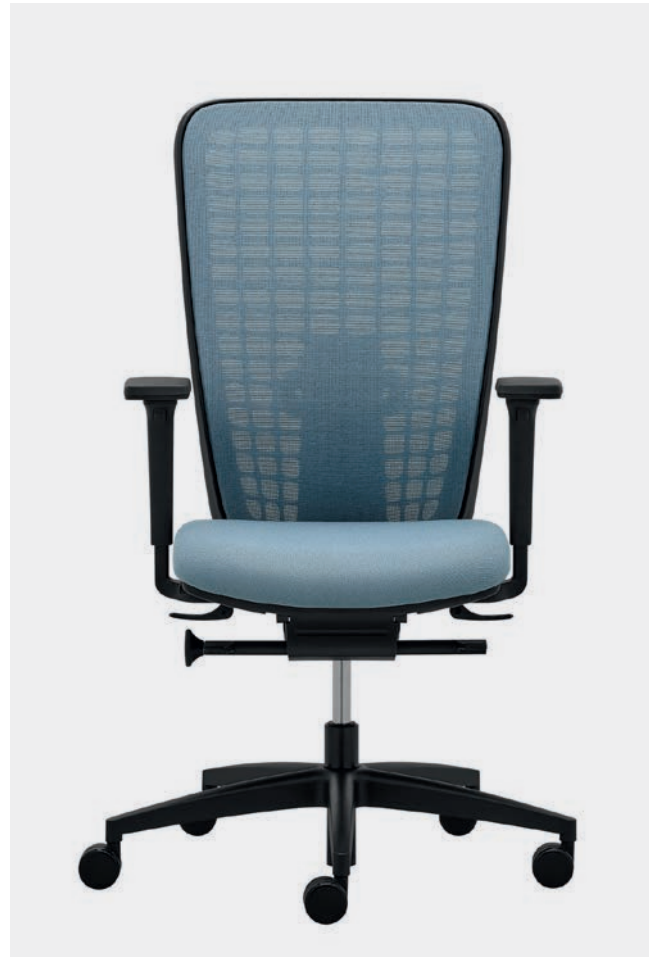


# Space

Design: Robin Platt (UK)



SP 1502  
ST1 / Type A <sup>2</sup>



SP 1522  
S3D



SP 1501  
ST1 / Type Ax <sup>1</sup>



<sup>1</sup> Type Ax (norm EN 1335) – office work chair with the largest range of adjustments  
<sup>2</sup> Type A (norm EN 1335) – office work chair with a large range of adjustments

# Muuna

Design: Massimo Costaglia  
& Giulio Mazzanti (IT)



MU 3101.04  
SELF 1C



MU 3101.15  
SELF 1C



MU 3101.15  
SELF 1C



Silvertext armrests



MU 3101.15  
SELF 1C







# Zero G

Design: Stefano Sandonà & Sabrina Bettini (ES)



ZG 1351



ZG 1352



ZG 1354



ZG 1353



# Victory

Design: Massimo Costaglia (IT)



VI 1412  
SELF 1



VI 1402  
SELF 1



VI 1401  
ST1



VI 1411  
ST1



VI 1421  
SW+



VI 1415  
ST2



VI 1405  
ST2



VI 1431



VI 1434



VI 1422  
SW+

# FLEXi

Design: Massimo Costaglia  
& Giulio Mazzanti (IT)



FX 1102 A  
SELF 1



FX 1103 A  
ST1



FX 1113 A  
ST1



FX 1112 A  
SELF 1



FX 1104  
ST1



FX 1114  
ST1



FX 1171



FX 1172  
SW2



FX 1173  
SW2



FX 1161



FX 1162  
SW2



FX 1163  
SW2

# FLEXi Tech

Design: Massimo Costaglia (IT)



---

FX 1124  
ST1



---

FX 1124  
ST1

# Easy Pro

Design: Rim Design Team (CZ)

New

14-15

FLEXiTech / Easy Pro



EP 1205  
ST2



EP 1205 L  
ST2



EP 1207  
ST5



EP 1207 L  
ST5



EP 1222



EP 1224



EP 1222 L



EP 1224 L





# Tea

Design: Massimo Costaglia  
& Giulio Mazzanti (IT)



TE 1302  
ER1



TE 1301  
ER1



TE 1303  
ER1



TE 1322  
SW2

# Focus

Design: Rim Design Team (CZ)



FO 646 A



FO 647 E



FO 649 E




FO 642 C  
ST1

# Futura 150

Design: Rim Design Team (CZ)



 Body weight  
up to 150 kg

FU 3121  
ST4

# Anatom

Design: Rim Design Team (CZ)



AT 985 A  
ST1



AT 986 B  
ST5



# Bello



BL 7360



# Kvadrato



KV 131



KV 132



KV 133.045

# Net



NT 682 A



NT 685 A

# Rondo



RO 942 A



RO 943 A



RO 952 A



RO 953 A

# Rewind



RW 2111  
SW+



RW 2112  
SW+



RW 2113  
SW+



RW 2101



RW 2102



RW 2103



RW 2106



RW 2107



RW 2108



Lalice | Bench



Rondo | Bench

# Redonda



RE 960.000



RE 960.001



RE 960.300



RE 960.100



RE 960.101



RE 960.301



# Web



WB 950.000\*



WB 950.001\*



WB 950.002\*



WB 950.101\*



WB 950.110



WB 950.100\*



WB 950.111



WB 950.102\*

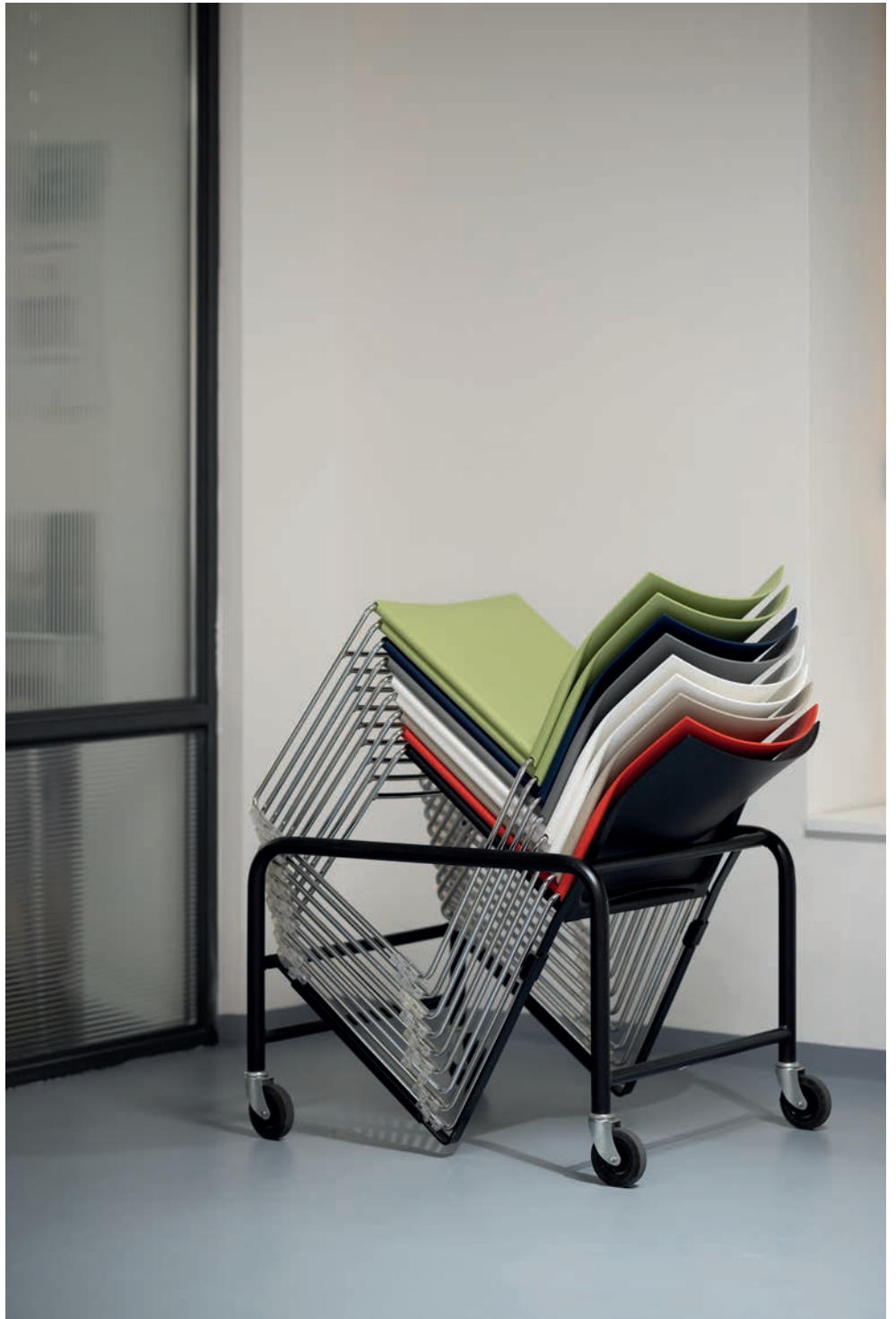




WB 950.011



WB 950.010



Stackable



WB 950.300\*



WB 950.301\*



WB 950.302\*

\* PCR plastic (post-consumer recycled) - grey colour

# Sitty



SI 4104.07



SI 4101



SI 4103



SI 4111



SI 4112



Stackable



SI 4121  
SW+



SI 4122  
SW+



SI 4123  
SW+



SI 4124  
SW+



SI 4161.02



SI 4162.12



SI 4164.13



Bench







# Winx

Design: Kai Stania (AT)



WX 881.03



WX 881.09



WX 881.06



WX 880.01



WX 880.03



WX 880.06



WX 880.04



WX 880.15



WX 882.24



WX 882.27

# Winx Lounge

Design: Kai Stania (AT)



WX 886.17



WX 886.09



WX 886.13



WX 886.01



WX 886.16





WX 885.09



WX 885.16



WX 885.17



WX 885.13



WX 885.01



WX 889.09



WX 889.17



WX 889.16



WX 889.01

# Edge

Design: Kai Stania (AT)



ED 4201.01



ED 4201.03



ED 4201.06



ED 4201.15



ED 4201.04



ED 4201.07



ED 4202.15



ED 4202.04



ED 4202.07



ED 4202.01



ED 4202.03



ED 4202.06



ED 4211.13



ED 4211.24



ED 4211.27





# Ca-Va

Design: Kai Stania (AT)



CV 870.03



CV 870.06



CV 870.01



CV 870.08

# Tania



TA 860.01



TA 860.15



TA 860.06



TA 860.04

# Anet



AN 865.04



AN 865.07



AN 865.01



AN 865.15



AN 865.06







# Organix

Design: Kai Stania (AT)



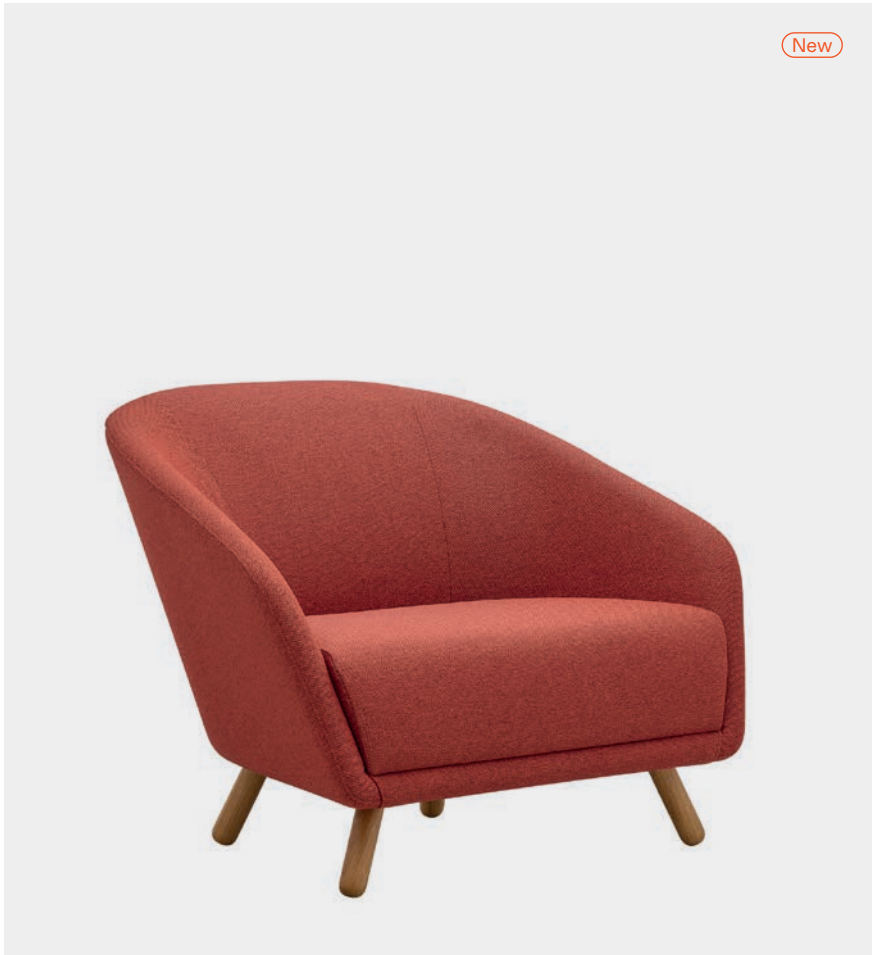
OX 5261



OX 5262



OX 5263



OX 5262.06



OX 5262.09



OX 5262.01



OX 5291



OX 5293



OX 5293.10

# Organix Privacy

Design: Kai Stania (AT)



New

OX 5281.09



New

OX 5281.06



OX 5281.01



OX 5282



# Organix Privacy Box

Design: Kai Stania (AT)



Organix Privacy Box | Setup



# Organix Corner System

Design: Kai Stania (AT)



Organix System | Setup



OX 5272  
corner 60°



OX 5271  
corner 90°



OX 5273 / OX 5274



OX 5275 / OX 5276

# Cubix

Design: Kai Stania (AT)



CX 5210



CX 5212



CX 5222



CX 5232



CX 5211



CX 5221



CX 5231





# Modular

Design: Martin Kožucharov (CZ)



MO 5110



MO 5111



MO 5114



MO 5112



MO 5113



MO 5121 | MO 5122 | MO 5123 | MO 5124



MO 5438



MO 5439

# Aleta

Design: Martin Kožucharov (CZ)



AL 843



AL 841



AL 842

# Stones

Design: Martin Kožucharov (CZ)



SE 7765.01



SE 7765.21



SE 7770



SE 7770.20



SE 7773



SE 7772



SE 7767.01



SE 7768



SE 7766



SE 7771



# Move

Design: Martin Kožucharov (CZ)



MV 7762.01



MV 7762



MV 7761



MV 7761.01

# Witty

Design: Rim Design Team (CZ)



WT 5465



WT 5461



WT 5464



WT 5491



WT 5492



WT 5494



# Coffee Tables



---

CV 871.06



---

CX 5251



---

CX 5253



---

OX 5292







New



CX 5254

New



CX 5255



# Connect

Design: Rim Design Team (CZ)



CO 5625



CO 5626



CO 5621



CO 5623

# Multi



MU 420

# Clap



CP 414

# Tables



TA 856.01



TA 861.01



862.01



TA 856.02



TA 861.02



TA 862.02

# Tip-Up



TU 890.01



TU 890.02

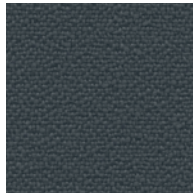


# Fabrics

# Bondai (P)



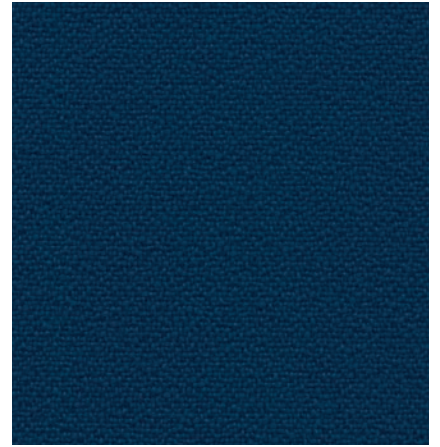
228



221

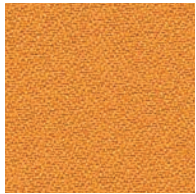


226



222

# Phoenix (A)



591



530



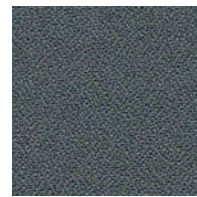
593



598



592



595



599

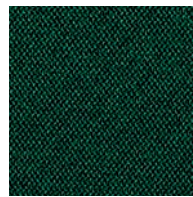
# Era (A)



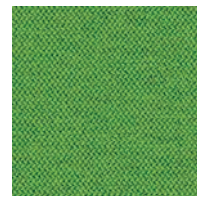
2075



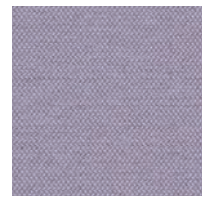
2074



2068



2046



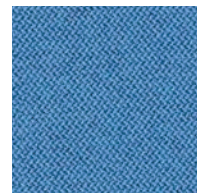
2058



2048



2049



2055



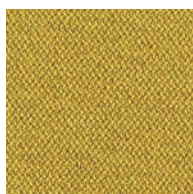
2045



2059



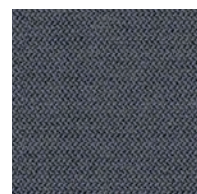
2064



2061



2050

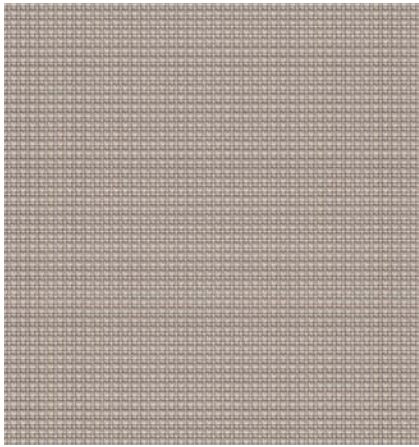


2051

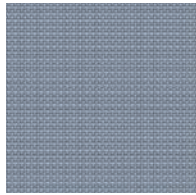


2052

## Urban (B)



3012



3001



3011



3016

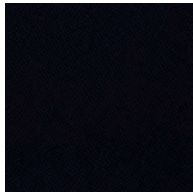


3007

## Tonal (B)



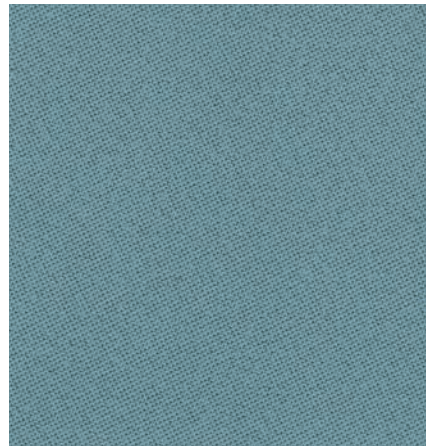
3206



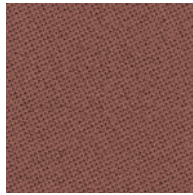
3207



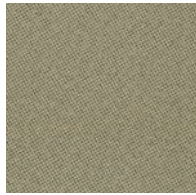
3202



3203



3201



3205



3204

## Nairobi (B)



3191



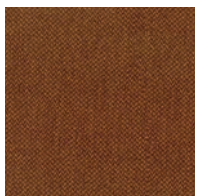
3184



3183



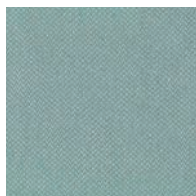
3182



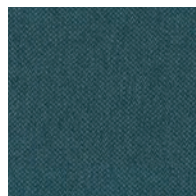
3192



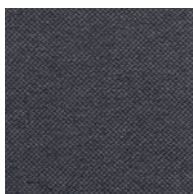
3186



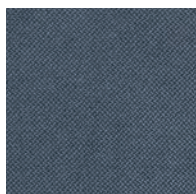
3188



3189



3187



3185



3181



3190



# Milton (B)



3129



3124



3131



3122



3127



3125

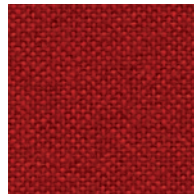


3130

# Jet Bioactive (B)



3157



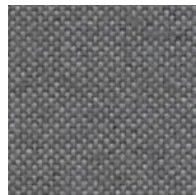
3161



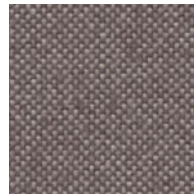
3155



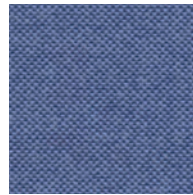
3159



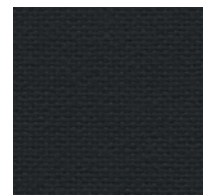
3152



3154

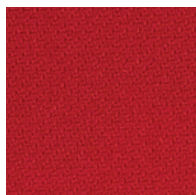


3164



3151

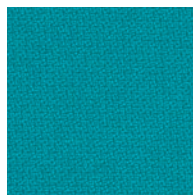
# Step/Step Melange (C)



4209



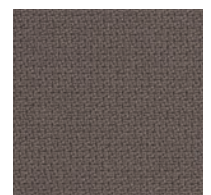
4279



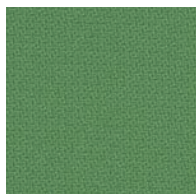
4211



4225



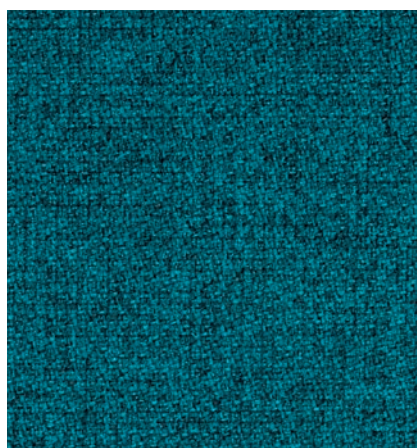
4202



4213



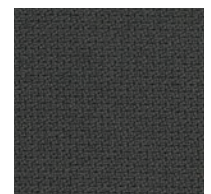
4214



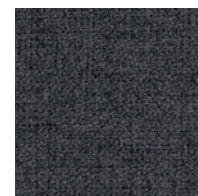
4212



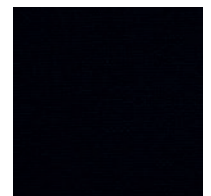
4260



4224



4203



4201

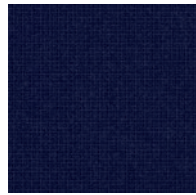
## Fame ©



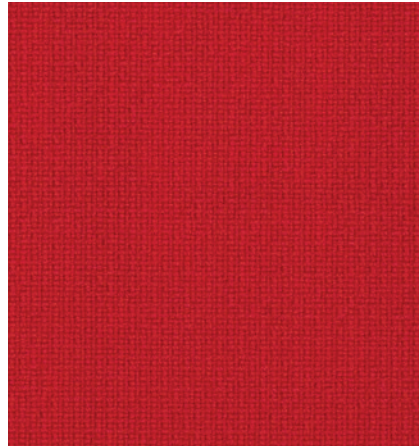
4153



4155



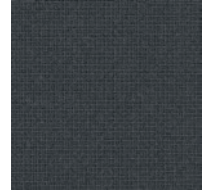
4159



4151

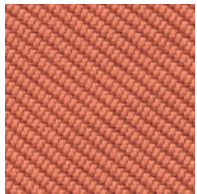


4168

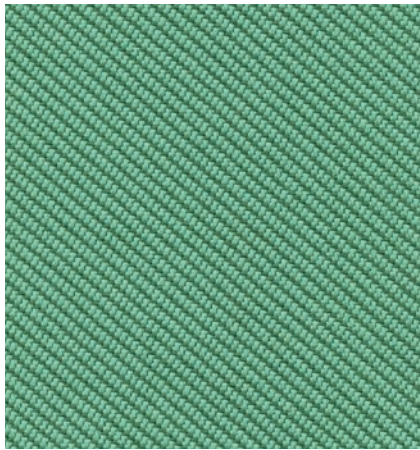


4166

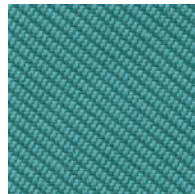
## Oceanic ©



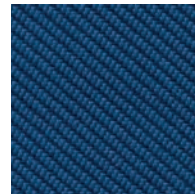
4354



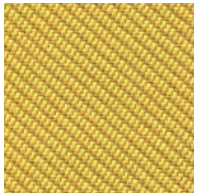
4356



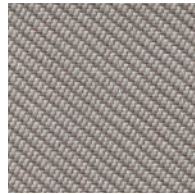
4353



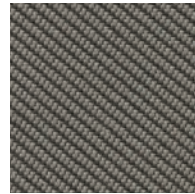
4358



4355



4352

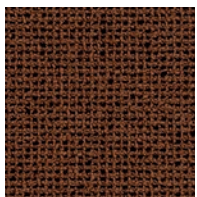


4357

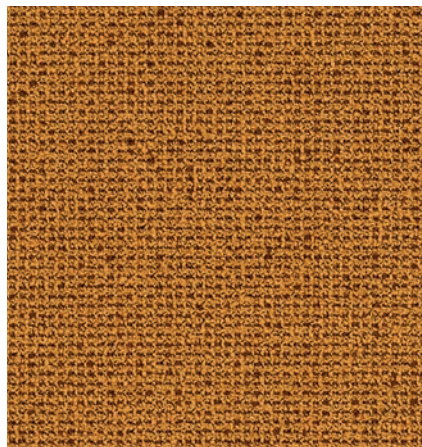


4351

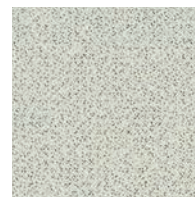
## Grain ©



4404



4406



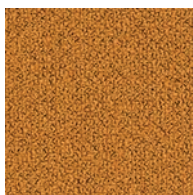
4407



4408



4403



4405



4401



4402

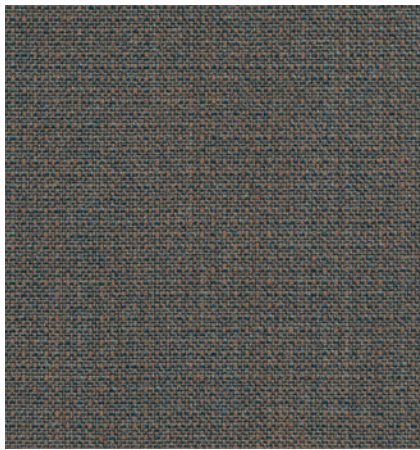


4410

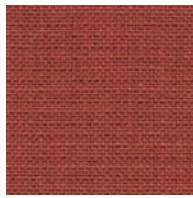


4409

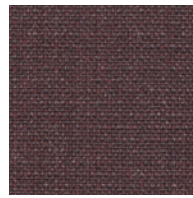
# Crisp (C)



4304



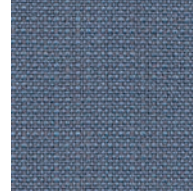
4307



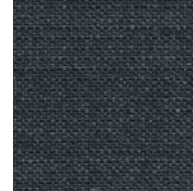
4311



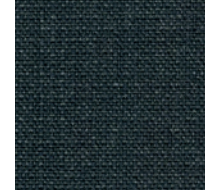
4302



4303



4301



4305

# Blazer (D)



5049



5132



5143



5119

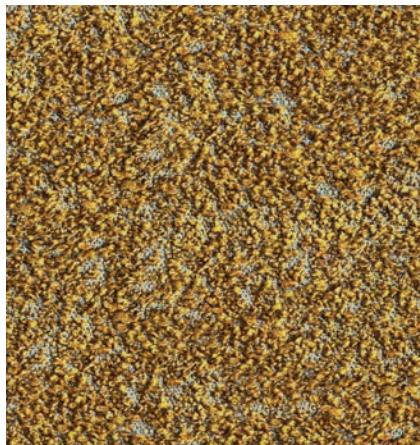


5144

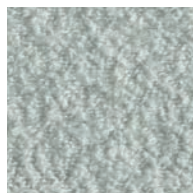


5145

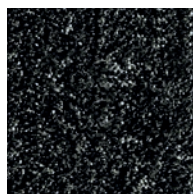
# Tresigallo (D)



5193

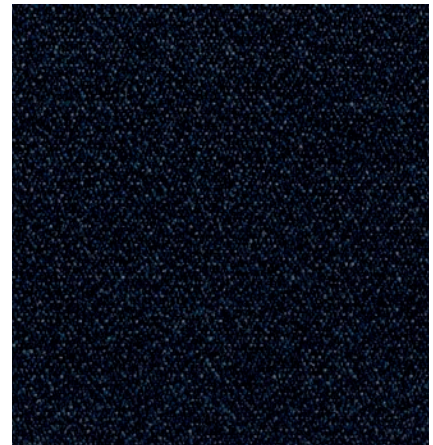


5192

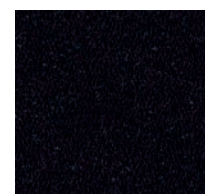


5191

# Flax (D)



5060



5064

## Valencia (B)



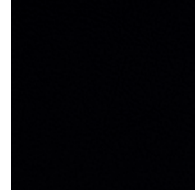
1702



1708



1709

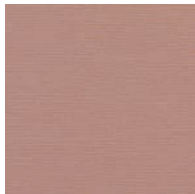


1710

## Silvertex (C)



1752



1760



1756



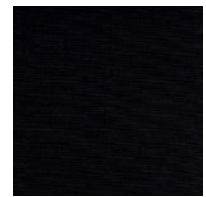
1755



1753

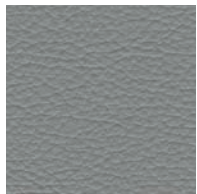


1759



1750

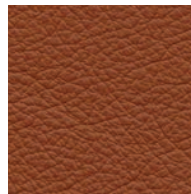
## Prince (E)



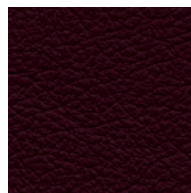
249



254



253



268



52

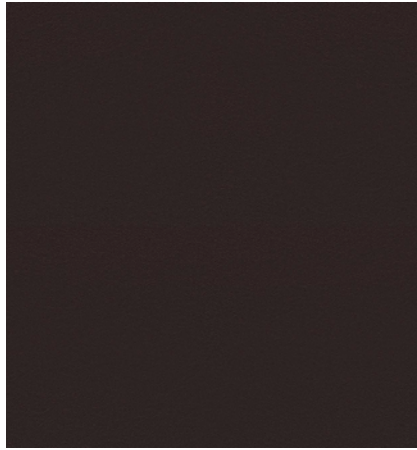
# Optimo (F)



8017



8013



8014



8012



8011

# Line



6008

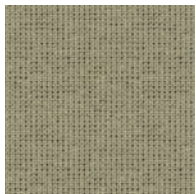


6004

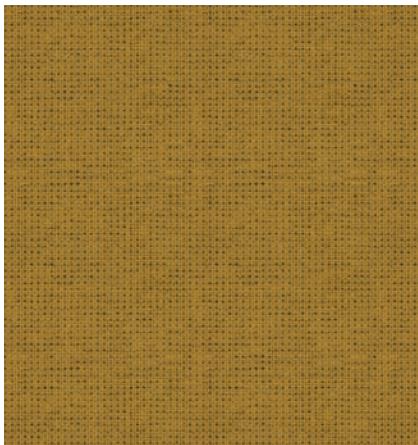


6005

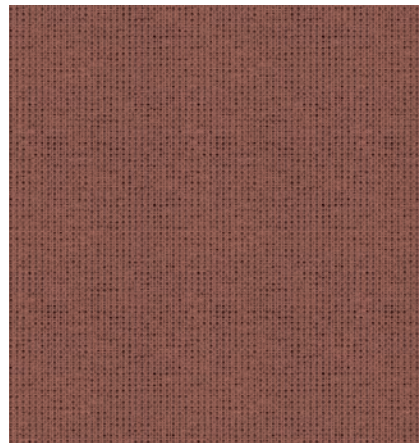
# Mesh Tale



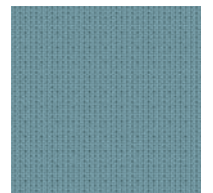
493



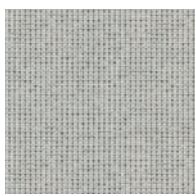
492



497



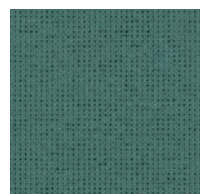
496



494

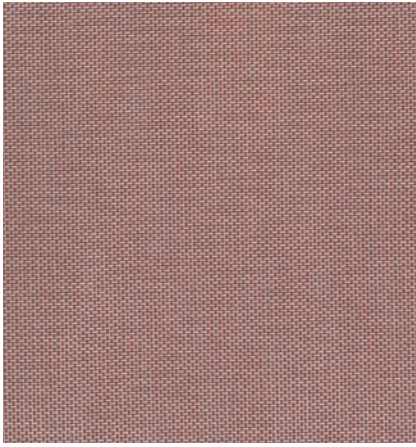


491

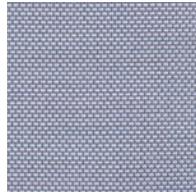


495

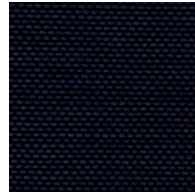
## Mesh Shrinx



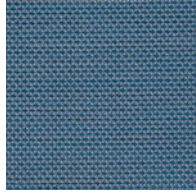
442



444

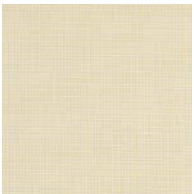


441



446

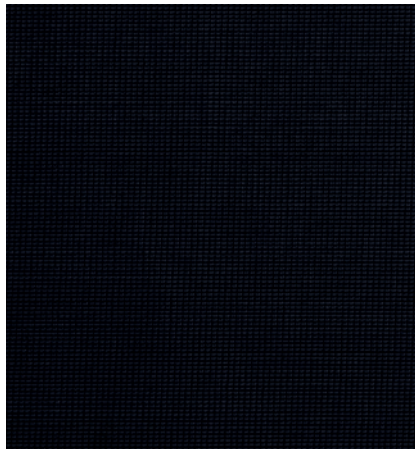
## Mesh K+R



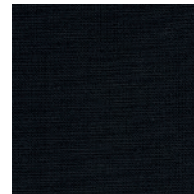
424



425



482



410

## Mesh Rib



431



435

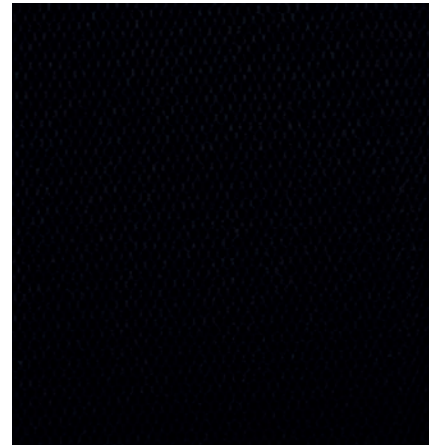


436



432

## Mesh Omega



474



